



FACULTY
OF HUMANITIES
Charles University

JAN EVANGELISTA PURKYNĚ UNIVERSITY IN ÚSTÍ NAD LABEM

Faculty of Social and Economic Studies

IEP Institute for Economic
and Environmental Policy

Assessing the local impacts of RES building

Lenka Zaňková

Faculty of humanities, Charles University

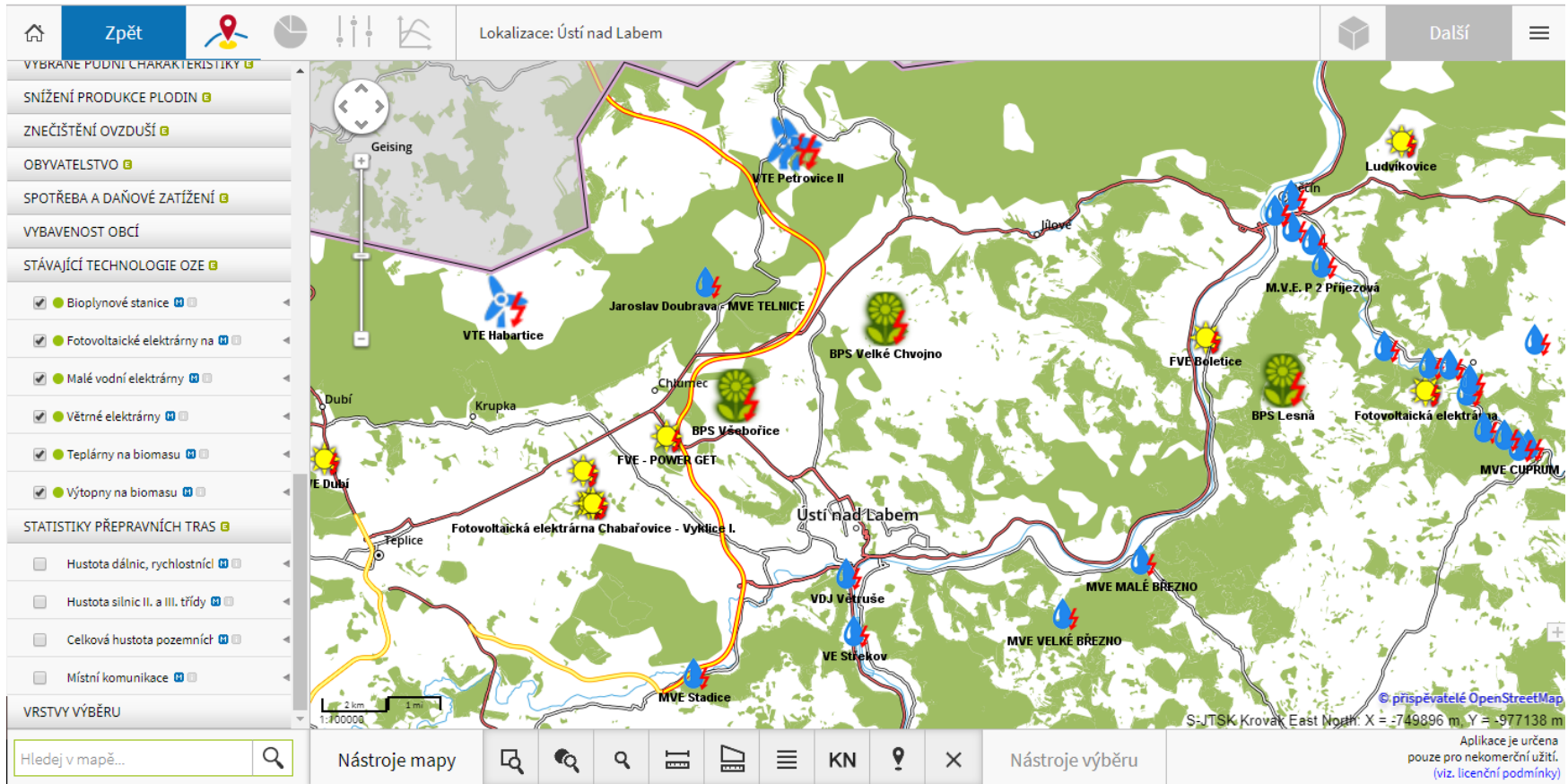
Faculty of social and economic studies, Jan Evangelista Purkyně University in Usti
nad Labem

„RESTEP“ project

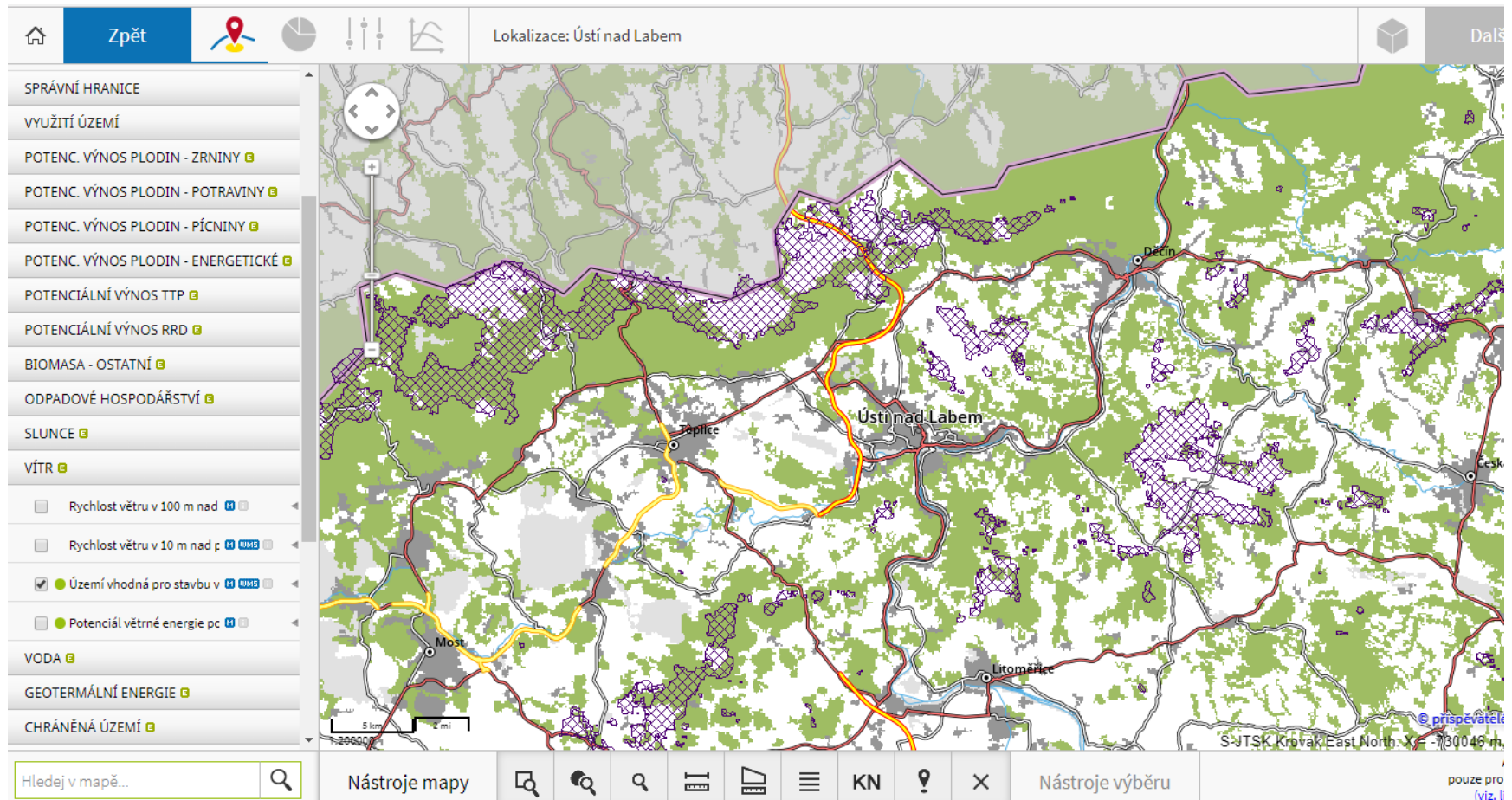
- Interactive map of RES for regional sustainable energy planning



„RESTEP“ project – current RES



„RESTEP“ project – appropriate areas for wind power plant

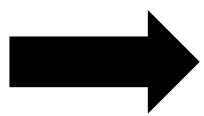


Introduction

- EU goal of 20% share of renewables in 2020 to mitigate CO2 emissions
- Czech Republic committed to the goal of 13%
- Decision for mayors: To built or not to built
- The complex impact assessment is missing
- Quantitative x qualitative point of view
- Number of evaluation methods
- Increasing demand for a complex tool at regional level

RegioIAF Development

- RIA – Regulatory Impact Assessment
- EIA – Environmental Impact Assessment
- LIA – Local Impact Assessment



Regional Impact Assessment Framework (RegioIAF)

- Renewable energy sources:
 - Photovoltaic
 - Wind
 - Water
 - Geothermal
 - Biogas stations

Regional Impact Assessment Framework

- Brings a complex evaluation framework for mayors (or investors) for decision-making processes
- Social, economic, environmental impacts at regional level
- Environmental impacts:
 - CO2 emission
 - Erosion
 - Water quality and consumption
 - Biodiversity
 - Air quality
 - Noise
- Multi-criteria analysis (better/worse, impact weight)

Primary Impacts: Multi-criteria analysis

Regional Impact Type	Influence degree							Criterion weight	Overall impact
	NEGATIVE (-)			No	POSITIVE (+)				
	significant	middle	low		low	middle	significant		
	-3	-2	-1	0	+1	+2	+3		
Long-term employment									
Short-term employment									
Regional GDP									
Revenues for the municipality									
Costs for the municipality									
Environmental impacts									
Agriculture/Forestry/Water									
Overall impact								100	
								%	

Secondary Impacts

- Secondary impacts (induced by the primary impacts and may not occur in each case)
 - Energy prices
 - Business environment
 - Infrastructure level
 - Municipality development
 - Education and human capital



Source: www.kozarov.cz

Conclusions

- Increasing demand for complex framework which will help mayors in decision-making process (what will this kind of RES bring to the municipality?)
- RIA x EIA x LIA → RegioIAF
- Multicriteria analysis consisting of all impacts (building and operation of RES)

Thank you for your attention!

Lenka Zaňková, zemkova@e-academia.eu



**FACULTY
OF HUMANITIES**
Charles University

JAN EVANGELISTA PURKYNĚ UNIVERSITY IN ÚSTÍ NAD LABEM

Faculty of Social and Economic Studies

